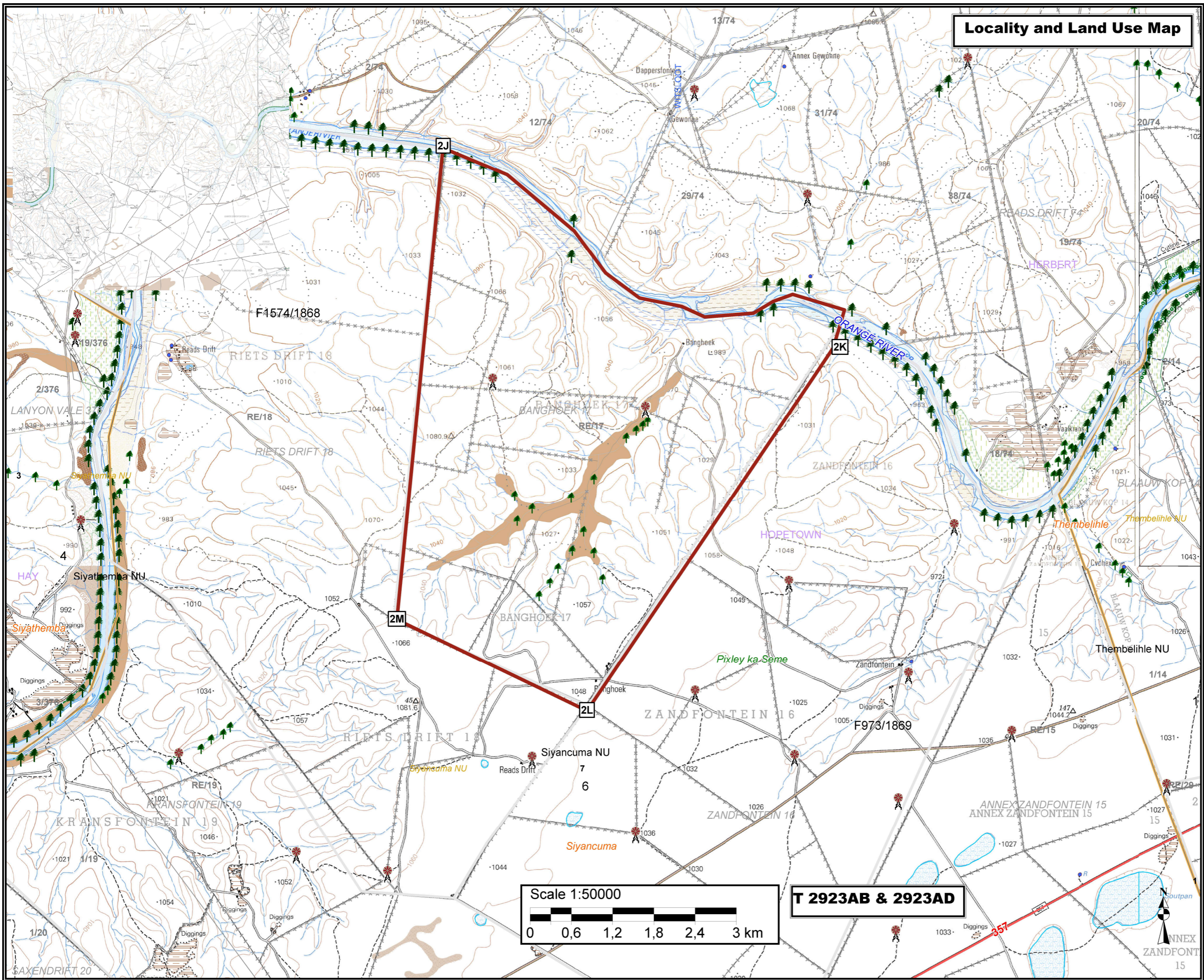


Locality and Land Use Map



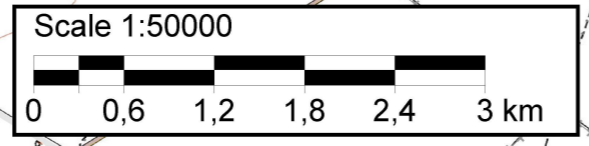
- Legend**
- Air transport
 - LANDING STRIP
 - Artificial surfaces
 - DIGGING
 - EXCAVATION
 - Inland water
 - DAM
 - NON-PERENNIAL PAN
 - PERENNIAL PAN
 - MARSH VLEI
 - DRY PAN
 - River
 - DRY WATER COURSE CENTER LINE
 - NON-PERENNIAL CENTER LINE
 - FLOOD BANK
 - SAND BANK
 - Northern Cape Province
 - Pixley ka Seme - District Municipality
 - Siyancuma - Local Municipality
 - Wards no - 7
 - HOPETOWN - Administrative region
 - Farm portions
 - Lease areas
 - Parent farms
 - Parks
 - Prospecting Right Application Area 2J-2M

The figure numbered 2J, inner bank of Orange river, 2K, 2L, 2M represents :
 Remaining extent of the farm BANGHOEK No.17
 EXTENT : 2847.5302 hectares
 Being part of a prospecting rights area
 Situated magisterial district of HOPETOWN

Proposed Prospecting area coordinates:
 2J -29.198192 °S; 23.397956 °E
 2K -29.222613 °S; 23.454487 °E
 2L -29.268837 °S; 23.418462 °E
 2M -29.257532 °S; 23.389813 °E

Client:
 STRATAAFRICA
 EXPLORATION (Pty) Ltd
 REG No. 2007/024251/07

Consultant:



T 2923AB & 2923AD